

Corrigendum

Corrigendum to “Organocatalyzed direct aldol condensation using L-proline and BINAM-prolinamides: regio-, diastereo-, and enantioselective controlled synthesis of 1,2-diols”
[Tetrahedron: *Asymmetry* 17 (2006) 1027]

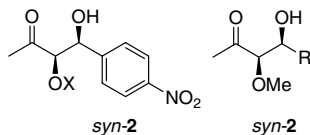
Gabriela Guillena, María del Carmen Hita and Carmen Nájera*

Dpto. Química Orgánica and Instituto de Síntesis Orgánica, Universidad de Alicante, Apdo. 99, E-03080 Alicante, Spain

Available online 3 May 2007

The authors apologize for the following errors in the above paper.

In Schemes 1 and 2 the absolute configuration of product *syn-2* could be the following:



In Table 2, the following data concerning to compounds **2ca** should be changed:

Entry	Products	Isomer ratio ^c		ee ^d (%)		
		Regioselectivity (2/3)	dr (<i>anti</i> / <i>syn</i>)	<i>anti-2</i>	<i>syn-2</i>	<i>iso-3</i> ^c
9	ca	2.4:1	4:1	88	19	60
10	ca	3:1	8.5:1	99	56	74

Therefore, the text on page 1030 concerning Table 2 entries 9 and 10, should be revised as follows:

‘A lower regioselectivity was observed affording mainly the *anti-2ca* (Table 2, entries 9 and 10). In this case, also *anti-2ca* was obtained with the highest enantioselectivity (88% and 99% ee).’

It should be noted that we are making these corrections in other two related publications: *Tetrahedron: Asymmetry* **2006**, *17*, 1493–1497 and *ARKIVOC* **2007**, *iv*, 260–269.